

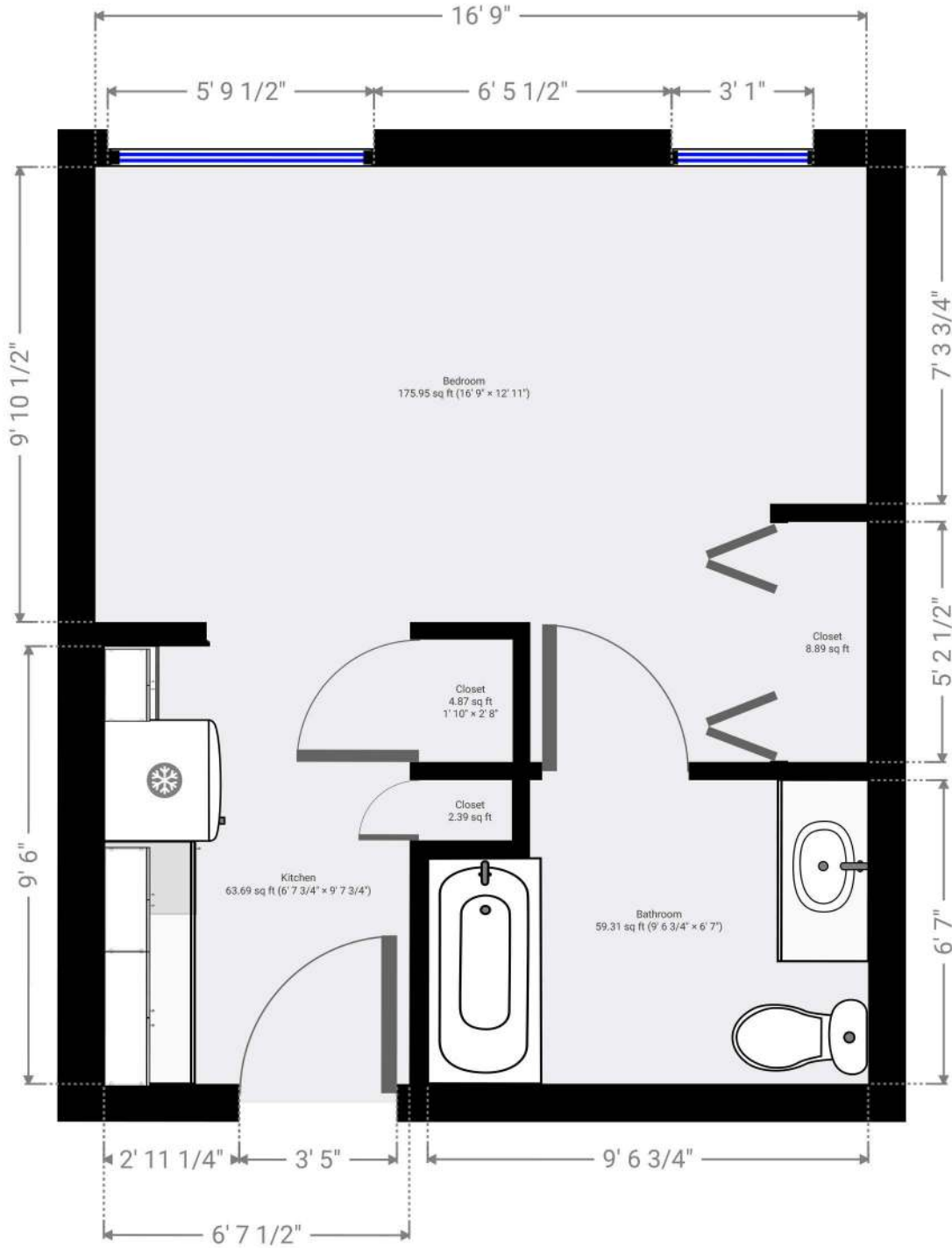
Poplar Estates Assisted Living

Studio Bedroom

TOTAL AREA: 394.64 sq ft • LIVING AREA: 394.64 sq ft • FLOORS: 1 • ROOMS: 2



TOTAL AREA: 394.64 sq ft • LIVING AREA: 394.64 sq ft • ROOMS: 2



THIS FLOORPLAN IS PROVIDED WITHOUT WARRANTY OF ANY KIND. SENSOPIA DISCLAIMS ANY WARRANTY INCLUDING, WITHOUT LIMITATION, SATISFACTORY QUALITY OR ACCURACY OF DIMENSIONS.

