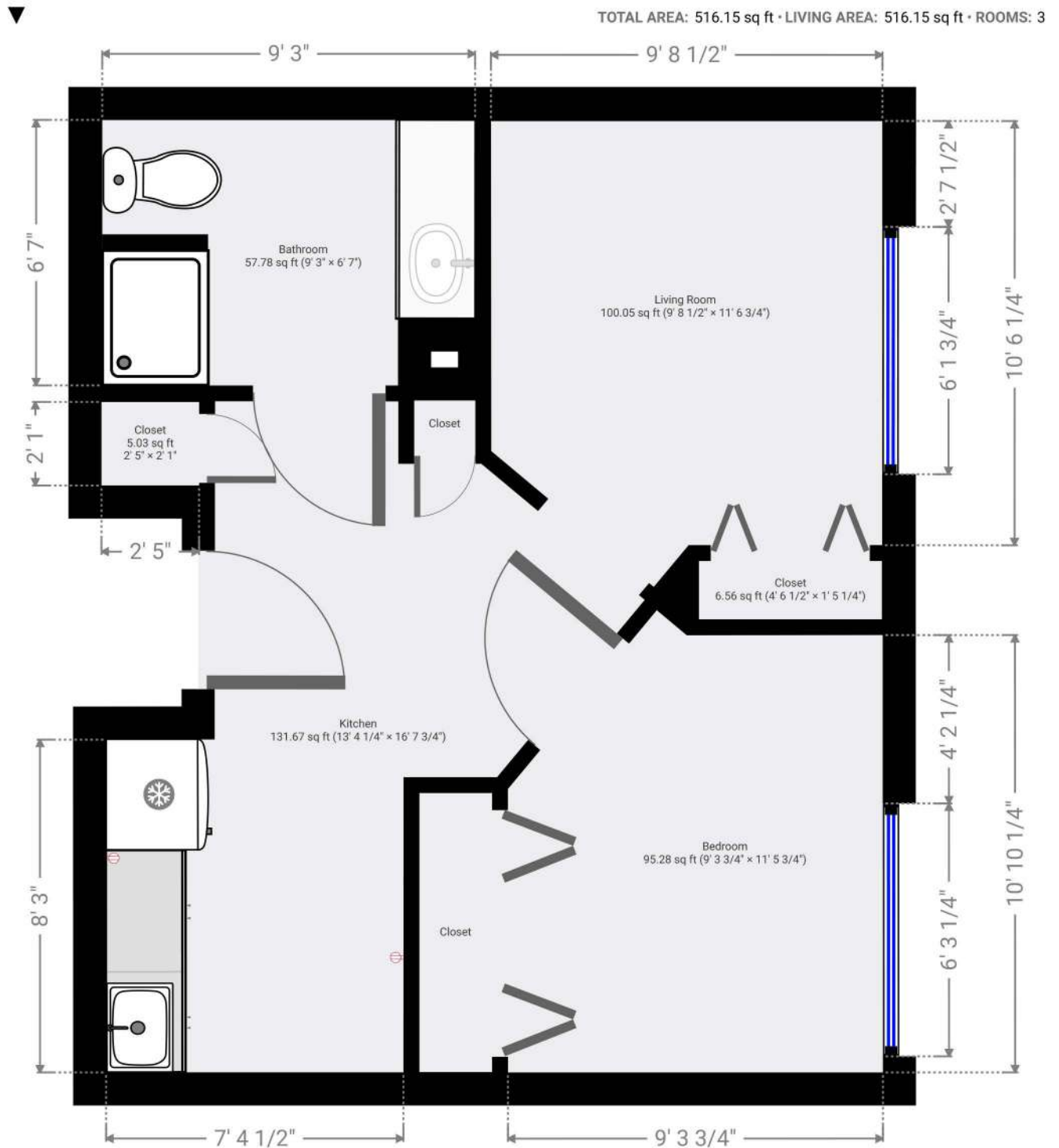


Poplar Estates Assisted Living

1 Bedroom - Floorplan A

TOTAL AREA: 516.15 sq ft • LIVING AREA: 516.15 sq ft • FLOORS: 1 • ROOMS: 3



THIS FLOORPLAN IS PROVIDED WITHOUT WARRANTY OF ANY KIND. SENSOPIA DISCLAIMS ANY WARRANTY INCLUDING, WITHOUT LIMITATION, SATISFACTORY QUALITY OR ACCURACY OF DIMENSIONS.

